

NSW EV destination charging grants

Approved EV charger software list (v1.2)



The EV charger software list has been created through a partnership between the NSW Government and the Electric Vehicle Council to support the NSW EV destination charging grants initiative. Only EV charger software included on this list will be funded under the NSW EV destination charging grants.

All EV charger software on this list has been assessed and approved against the following criteria:

- Enable the remote management of an EV charger
- Be available and supported within Australia
- Be compatible with OCPP 1.6 (a communications protocol allowing robust communication with the charger)
- Have a user-friendly interface
- Be available on Android and iOS operating systems

If you are not participating in the EV destination charging grants, you can still use this list to help you select EV charger software that suits your needs.

Do I need EV charger software as part of the grants?

Follow the steps shown in the diagram to determine whether to select an EV charger only, or an EV charger and EV charger software.

If you require EV charger software, **you must select your software** before selecting your EV charger, as not all software supports all chargers.

How to use the list

Listed below are the EV charger brands that each software supplier supports. The list is arranged by alphabetical order, by supplier name. The last column shows the brands of approved EV chargers that each software supplier can support. You must ensure that the specific charger you select from the approved EV charger list can be supported by your selected software. Your software supplier will be able to assist you with this.

The approved software options vary widely in look, feel and capabilities. We encourage you to speak to the software suppliers in this list to understand more about their software capabilities and subscription details.

Software suppliers may also be able to provide pricing for some of the EV chargers on the approved EV charger list, and in some cases, they offer turn-key installation services.

The pricing shown in this list has been provided by each EV charger software supplier and approved by the Electric Vehicle Council and NSW Government. The EV destination charging grants can contribute 50% towards the cost of a 2-year subscription, based on the prices shown in this list. If you are applying for EV chargers at multiple sites you own/operate, you must obtain a separate commercial quote for charging software at each site. Grants applicants should consider any terms and conditions stipulated by each software provider.

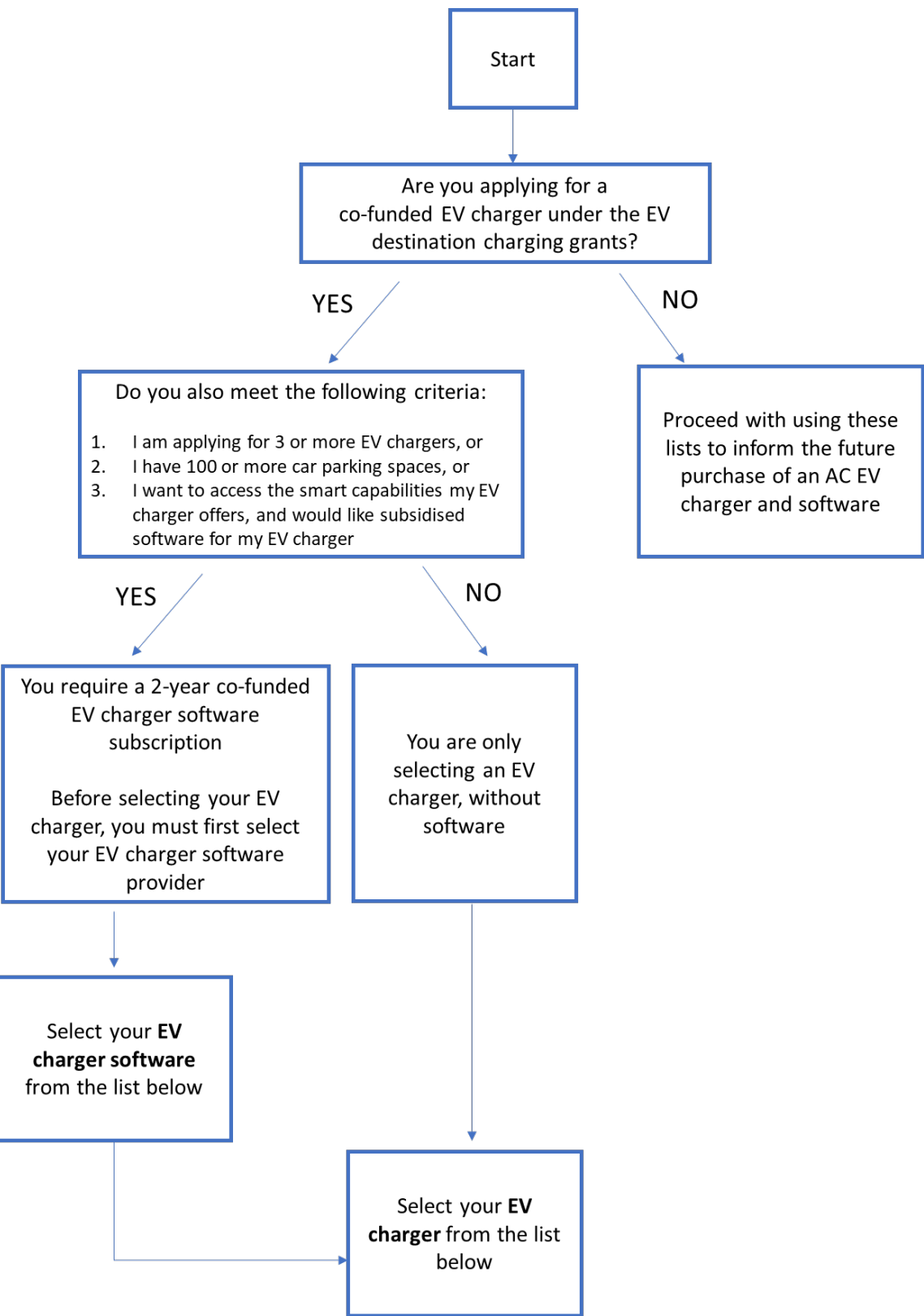
Disclaimer:

The EVC has run an Expression of Interest process to develop this list of approved EV charging hardware and software products on behalf of the NSW government and has based the list on information and assertions provided to the EVC by the equipment and software suppliers. The EVC and NSW Government do not take responsibility for the accuracy of the information supplied to us, and hence do not accept responsibility for any losses associated with the use of the information presented on this list. It is the responsibility of anyone using this list to conduct their own research and due diligence on each supplier and EV charging hardware/software prior to purchase or installation.

Updates:

V1.1: Added EVUp as a software provider, correcting for administrative error made during preparation of V1.0

V1.2: Added disclaimer



Approved EV software supplier	Software platform	Pricing arrangement (all prices AUD, ex-GST)	Brands of approved charging hardware supported NOTE: software providers do not necessarily support all approved hardware from a specific brand.
Charge N Go Australia	EVNet - EV ChargePoint Management Software	Platform Fee: \$275 per annum per charge port Management Fee: \$0.10 per kWh delivered	ABB, Circontrol, EVBox, Schneider Electric, Siemens, Wallbox
E'langa	E'langa	Standard pricing: \$170 per annum (single charge port) \$300 per annum (dual charge port) 2-year subscription up-front pricing: \$300 - single charge port \$520 - dual charge port	ABB, Alfen, Circontrol, Delta Electronics, Elinta, EVBox, Schneider Electric, Siemens, Wallbox
Everyty	Everyty	Everyty Starter - \$300 per annum (single charge port) Everyty Starter - \$360 per annum (dual charge port) Everyty Professional - \$380 per annum (single charge port) Everyty Professional - \$600 per annum (dual charge port)	Schneider Electric, ABB, Delta Electronics
EVSE	Exploren OCPP Based Charger Management Software Platform	Monitoring & Reporting: \$150 per annum per charge port Monitoring, Reporting & Billing: \$250 per annum per charge port	ABB, Delta Electronics, Ocular, Schneider Electric
EVUp	EVUp Upcharge	\$495 per site per annum, for up to five charge ports	ABB, Circontrol, EVUp, Garo, Schneider Electric, Wallbox
Jetcharge	Chargefox	Public subscription (4G data): \$390.00 per annum per charge port Public subscription (base building internet): \$330.00 per annum per charge port	Circontrol, Delta Electronics, JET Charge, Schneider Electric
Gemtek	Swarco e-Connect	\$390 per annum per charge port	ABB, Alfen, Circontrol, Delta Electronics, Garo, Indra, Schneider Electric, Siemens
Noodoe	Noodoe EV OS	1 year licence: \$180 per charge port 2 year licence: \$220 per charge port 5 year licence: \$400 per charge port +9% of the value of each public transaction.	Noodoe
Smart EV Solutions	Smart Charge	\$280 per annum per charge port	EVBox

NSW EV destination charging grants



Approved EV destination charger list (v1.2)

The EV destination charger list has been created through a partnership between the NSW Government and the Electric Vehicle Council to support the NSW EV destination charging grants initiative. Only EV chargers included on this list will be funded under the NSW EV destination charging grants.

All EV chargers on this list have been assessed and approved against the following criteria:

- Available within Australia, with a procurement lead time of no more than 3 months
- Compliant to relevant Australian standards
- Able to support charging of any EV make/model available in Australia
 - Note, it is acceptable for the EVSE to have automotive OEM branding, provided the charger can support all vehicles
- Type 2 socket outlet or Type 2 tethered cable
- 7kW or 22kW AC output
- OCPP 1.6 and/or OCPP 2.0 communications capability, over at least one of Ethernet, Wifi or 4G
- Ingress protection rating of IP54 or higher
- Impact protection rating of IK08 or higher

If you are not participating in the EV destination charging grants, you can use this list to help you select an AC EV charger that suits your needs.

Am I only applying for a co-funded EV charger, or do I also need EV charger software?

Follow the steps shown in the diagram to decide whether to select an EV charger only or an EV charger and EV charger software.

If you require EV charger software you must **go to the EV Charger Software List** and select your software first, as not all software supports all chargers.

For ease of reference, EV charger manufacturers on this list marked with (*) are supported by at least one software supplier on the approved EV Charger Software List. For manufacturers not marked with a (*), software suppliers may be available in the market but as they are not on the approved list, they cannot be co-funded under the grants.

How to use the list

Listed below are the EV chargers that are approved under the EV destination charging grants. You can select up to four (4) EV chargers from this list for each separate site within your grants application.

The list is arranged in alphabetical order by manufacturer, except where adjusted for formatting reasons. It shows each manufacturer, the EV charger type, size, and model number, and whether it can be mounted on a post or on a wall in your car park.

Pedestal-type chargers are designed to ground-mount and are especially useful in cases where there is not a wall near the parking space suitable for a wall-mounted charger.

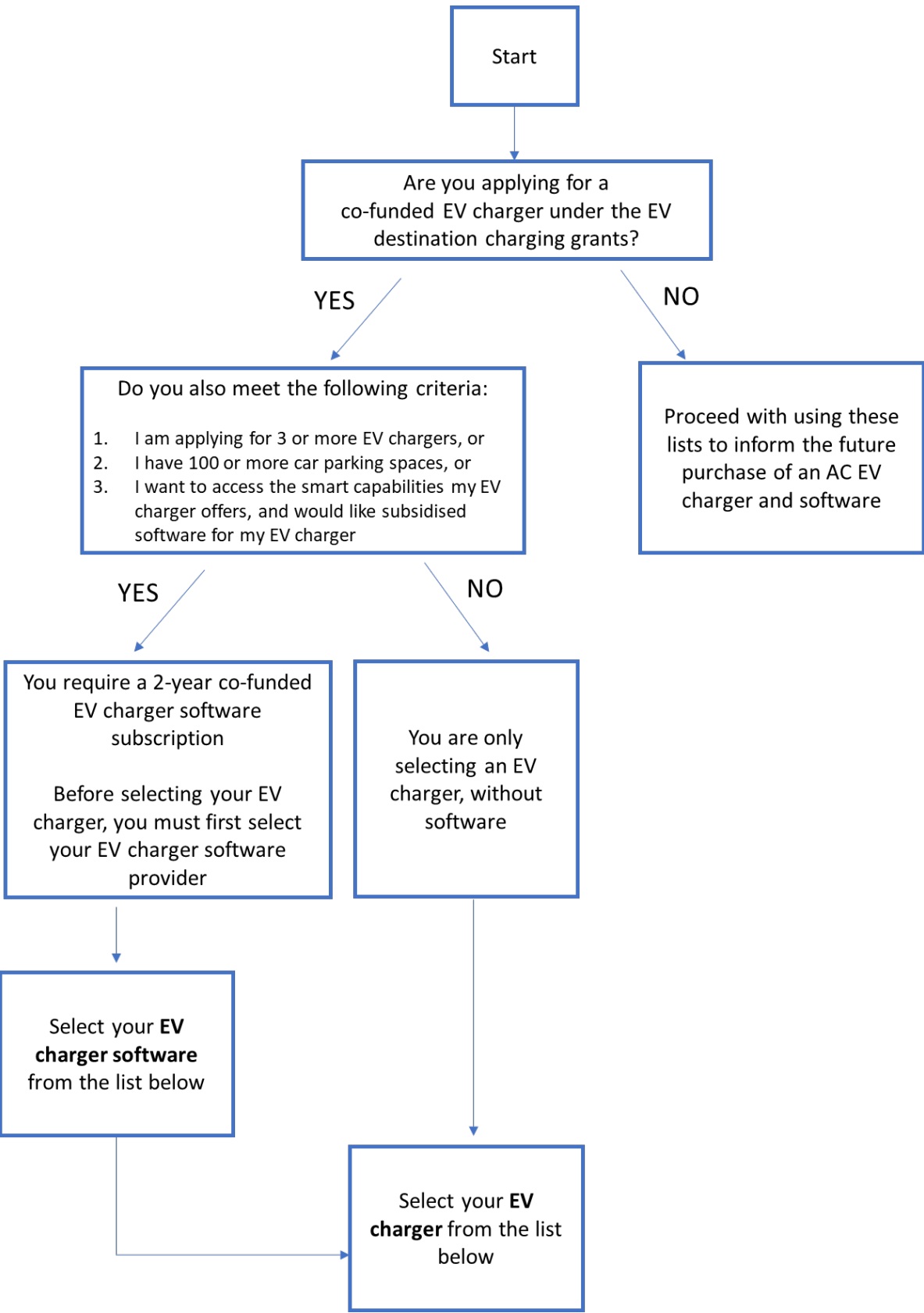
Wall-mounted chargers are typically significantly lower cost than pedestal-type chargers but require a convenient wall or post next to the car parking space for mounting.

Who do I get my EV charger quote from?

There are multiple ways to purchase the EV charger you have selected from this list. Some manufacturers and suppliers on this list sell EV chargers and installation services direct to public, others supply EV chargers through wholesalers, electrical contractors, or specialist EV charger installers.

The list shows both the manufacturer of each approved EV charger and suppliers that also sell each approved EV charger. Each supplier shown below has been vetted prior to their inclusion on this list.

You can choose to purchase your selected charger directly from the manufacturer (if available) or supplier, or you can have a licensed electrician source it for you. What’s most important is that the EV charger you select is included on the list below, and you obtain a commercial quote for that exact charger.



The charger and installation can be combined within one commercial quote from a supplier or licensed electrician, or can be procured separately.

If you are submitting a grants application for more than one site in NSW, you must obtain a separate quote for each site.

What do the different prices shown in this list mean?

As with most products on the market, EV chargers usually have a recommended retail price (RRP) that is set by the manufacturer or importer to guide what their product can be retailed for. Suppliers that sell an EV charger can then decide to sell at that RRP price, or to include their own markup and overhead costs, or to apply discounts. This is normal business practise.

Where available, the manufacturer’s RRP has been included in this list. A range of retail prices for each charger have also been captured in this list. These are shown in the “supplier price range” column. The lower value is the cheapest price offered by suppliers on this list, and the upper value is the highest price for that EV charger that’s offered by suppliers on this list.

The EV destination charging grants can fund up to 75% of the cost of each EV charger on this list **up to the highest price shown against each EV charger**. It is up to you as a grants applicant to confirm the cost of your selected EV charger within this range via a commercial quote.

I’ve selected my EV charger(s) from this list and obtained quote(s) to purchase and install, what next?

Grants applicants should consider any terms and conditions outlined by each EV charger manufacturer or supplier.

Once you are happy with the quote for your selected EV charger(s), you can submit an application under the EV destination charging grants. You will be asked to provide copies of your quote(s) within your application.

You must wait for your application to be assessed before proceeding with the purchase and installation of any EV charger from this list.

Disclaimer:

The EVC has run an Expression of Interest process to develop this list of approved EV charging hardware and software products on behalf of the NSW government and has based the list on information and assertions provided to the EVC by the equipment and software suppliers. The EVC and NSW Government do not take responsibility for the accuracy of the information supplied to us, and hence do not accept responsibility for any losses associated with the use of the information presented on this list. It is the responsibility of anyone using this list to conduct their own research and due diligence on each supplier and EV charging hardware/software prior to purchase or installation.

Updates:

V1.1: Added asterisk marker to EVUp hardware, in line with adjustment to software list

V1.2: Adjusted pricing on Starcharge products, correcting for error made by applicant in submission

V1.2: Added disclaimer

Approved EV charger manufacturer	Approved EV charger	Model Number	Vetted EV charger suppliers	Supplier price range (\$) <small>ex GST</small>
ABB *	Wall mounted chargers			
	Terra AC Wallbox - Three Phase 22kW Socket, type 2	6AGC081279	ABB, IPD, Gemtek	\$1,975 - \$2,338
	Terra AC Wallbox - Three Phase 22kW Socket, type 2, RFID	6AGC082157		\$2,637 - \$2,901
	Terra AC Wallbox - Single Phase 7.4kW Socket, type 2, RFID	6AGC085382		\$1,871 - \$2,112
	Terra AC Wallbox - Single Phase 7.4kW Socket, type 2	6AGC081278		\$1,625 - \$2,004
	Terra AC Wallbox - Three Phase 22kW Socket, type 2, RFID	6AGC082152		\$2,221 - \$2,444
	Terra AC Wallbox - Single Phase 7.4kW Socket, type 2, RFID, 4G	6AGC085383	ABB, IPD	\$2,069 - \$2,277
	Terra AC Wallbox - Single Phase 7.4kW Cable 5M, type 2, RFID, 4G	6AGC085385		\$2,202 - \$2,423
	Terra AC Wallbox - Three Phase 22kW Socket, type 2, RFID, 4G	6AGC082153		\$2,400 - \$2,641
	Terra AC Wallbox - Single Phase 7.4kW Cable 5M, type 2, RFID	6AGC082155	ABB, Gemtek, IPD, Charge N Go Australia	\$1,771 - \$2,390
	Terra AC W7-T-RD-MC-0 Single Phase with Display & MID Certified Meter 7.4kW Socket	6AGC082174	Charge N Go Australia	\$2,038
	Terra AC W7-G5-RD-MC-0 Single Phase with Display & MID Certified Meter 7.4kW Cable 5M	6AGC085386		\$2,178
	Terra AC W22-T-RD-MC-0 Three Phase with Display & MID Certified Meter 22kW Socket	6AGC081281		\$2,813
	Terra AC W22-G5-RD-MC-0 Three Phase with Display & MID Certified Meter 22kW Cable 5M	6AGC081285		\$2,997

Approved EV charger manufacturer	Approved EV charger	Model Number	Vetted EV charger suppliers	Supplier price range (\$) <small>ex GST</small>
Alfen *	Wall mounted chargers			
	Single Pro-Line 1P Socket 7kW 1-phase	904460003	E'langa	\$1,562
	Single Pro-Line 1P Cable (5M) 7kW 1-phase	904460007		\$1,712
	Single Pro-Line 3P Socket 22kW 3-phase	904460023		\$1,612
	Single Pro-Line 3P Cable (5M) 22kW 3-phase	904460027		\$1,762
	Double Pro-Line 1P Double Socket 7kW 1-phase	904461032		\$3,234
	Double Pro-Line 3P Double Socket 22kW 3-phase	904461022		\$3,285
	Twin 2 Socket 22kW 3-phase	934452502		\$3,478

Approved EV charger manufacturer	Approved EV charger	Model Number	Vetted EV charger suppliers	Supplier price range (\$) <small>ex GST</small>
Delta Electronics *	Wall mounted chargers			
	AC MAX Charger - AC Wallbox for residential and semi-public applications. Plug 5M	EIAW-E22KTSE5A04	NHP	\$1,750
	AC MAX Charger - AC Wallbox for residential and semi-public applications. Shutter	EIAW-E22KTSH0A04		\$1,750
	AC MAX Charger - AC Wallbox for residential and semi-public applications. Socket	EIAW-E22KTSS0A04		\$1,750

Approved EV charger manufacturer	Approved EV charger	Model Number	Vetted EV charger suppliers	Supplier price range (\$) <small>ex GST</small>
Elinta *	Wall mounted chargers			
	Homebox Slim Socket 7kW 1-phase	EM-HBS-74	E'langa	\$1,177
	Homebox Slim Cable 7kW 1-phase	EM-HBS-74-PLUS		\$1,354
	Homebox Slim Socket 22kW 3-phase	EM-HBS-22		\$1,387
	Homebox Slim Cable 22kW 3-phase	EM-HBS-22-PLUS		\$1,564
	Citycharge V2 Plus (cables) 2 X 22kW 3-phase (44kW)	EM-CC-V2-PLUS		\$5,384
	Citycharge V2 (sockets) 2 X 22kW 3-phase (44kW)	EM-CC-V2		\$4,873

Approved EV charger manufacturer	Approved EV charger	Model Number	Vetted EV charger suppliers	Supplier price range (\$) <small>ex GST</small>
EN+	Wall mounted chargers			
	7kW Single Phase Charger	AC7000-BE-34	NewNRG2Go	\$1,600
	22kW Three Phase Charger	AC022K-BE-34		\$2,500

Approved EV charger manufacturer	Approved EV charger	Model Number	Vetted EV charger suppliers	Supplier price range (\$) <small>ex GST</small>
EVOS Energy	Wall mounted chargers			
	Fleet Home22 , 22kW AC Home Charger	FAC22-001	EVOS Energy	\$2,200

Approved EV charger manufacturer	Approved EV charger	Model Number	Vetted EV charger suppliers	Supplier price range (\$) <small>ex GST</small>
Circontrol *	Wall mounted chargers		E'langa	\$1,628
	eNEXT Park S 1-phase, 7kW, 1-socket	WNP00032011		\$1,706
	eNEXT Park T 3-phase, 22kW, 1-socket	WNP00032013		\$1,628
	eNEXT Elite S 1-phase, 7kW, 1-socket	WNC00032011		\$1,816
	eNEXT Elite T 3-phase, 22kW, 1-socket	WNC00032013	E-station	\$1,700
	ENEXT ELITE Single Phase socket/cable wall bollard charging station with Type 2 tethered cable. 7kW	Model S		\$1,700
	ENEXT ELITE Three Phase socket/cable wall bollard charging station with Type 2 tethered cable. 22kW	Model T		\$5,990
	Evolve Smart Twin - Single Phase dual socket/cable wall mounted charging station. RFID, 4G 14.7kW (7kW per socket)	Evolve Smart S		\$5,990
	Evolve Smart Twin - Single Phase dual socket/cable wall mounted charging station. RFID, MiD Meter, 4G, 44kW (1x22kW & 2x11kW)	Evolve Smart T	EV charging stations	\$2,300
	Circontrol eNext Park / Wall or Pedestal 7.4kW	Model S / eNext Park		\$2,565
	Circontrol eNext Park / Wall or Pedestal 22kW	Model T / eNext Park		\$3,177
	Circontrol eNext Park / Wall or Pedestal 7.4kW	Model S Two / eNext Park		\$2,427
	Circontrol eNext Elite / Wall or Pedestal 7.4kW	Model S / eNext Elite		\$2,684
	Circontrol eNext Elite / Wall or Pedestal 22kW	Model T / eNext Elite		\$6,400
	Circontrol eVolve Smart / Wall or Pedestal 7.4kW	Model S One / eVolve Smart		\$6,767
	Circontrol eVolve Smart / Wall or Pedestal 22kW	Model T One / eVolve Smart		\$7,200
	Circontrol eVolve Smart / Wall or Pedestal 7.4kW	Model S / eVolve Smart		\$7,535
	Circontrol eVolve Smart / Wall or Pedestal 22kW	Model T / eVolve Smart		
	Pedestal mounted chargers		E'langa	\$2,833
	eVolve Smart S 1-phase, 7kW, 2-sockets	WVS00064011		\$1,816
	eVolve Smart T 3-phase, 22kW, 2-sockets	WVS00064013		\$3,703
	Post eVolve Smart S 1-phase, 7kW, 2-sockets	PVS00064011		\$3,993
	Post eVolve Smart Y 3-phase, 22kW, 2-sockets	PVS00064013	E-station	\$6,990
	Evolve Smart Twin - Three Phase dual socket/cable bollard mounted charging station. RFID, MiD Meter 14.7kW (7kW per socket)	Evolve Smart S		\$6,990
	Evolve Smart Twin - Three Phase dual socket/cable bollard mounted charging station. RFID, MiD Meter, 4G, 44kW (1x22kW & 2x11kW)	Evolve Smart T		\$9,900
	Evolve Smart + payment terminal Single phase dual socket/cable bollard mounted charging station, RFID, MID, 4G, 14.7kW	Evolve Credit Card Master S		\$9,900
	Evolve Smart + payment terminal Three phase dual socket/cable bollard mounted charging station, RFID, MID, 4G, (1x22kW & 2x11kW)	Evolve Credit Card Master T	EV charging stations	\$8,348
	Circontrol eVolve Smart / Post 7.4kW	Model S One / eVolve Smart Post		\$8,889
	Circontrol eVolve Smart / Post 22kW	Model T One / eVolve Smart Post		\$9,100
	Circontrol eVolve Smart / Post 7.4kW	Model S / eVolve Smart Post		\$9,557
	Circontrol eVolve Smart / Post 22kW	Model T / eVolve Smart Post		

Approved EV charger manufacturer	Approved EV charger	Model Number	Vetted EV charger suppliers	Supplier price range (\$) <small>ex GST</small>
EVESCo	Wall mounted chargers		Sealed Performance Batteries	\$2,727
	7kW AC Wall Charger, 0-32A output current	EVAC-7 (EU-D)		\$2,909
	22kW AC Wall Charger, 0-32A output current	EVAC-22 (EU-D)		

Approved EV charger manufacturer	Approved EV charger	Model Number	Vetted EV charger suppliers	Supplier price range (\$) <small>ex GST</small>
EVUp *	Pedestal mounted chargers		EVUp	\$5,499
	AURIGA Dual Port 7kW c/w OCPP	EVOAUR7x2PPOCPP		\$7,499
	AURIGA Dual Port 22kW c/w OCPP	EVOAUR22x2PPOCPP		

Approved EV charger manufacturer	Approved EV charger	Model Number	Vetted EV charger suppliers	Supplier price range (\$) <small>ex GST</small>
Evbox	Wall mounted chargers		Smart EV solutions	
	EVBox Elvi Wifi Only, 1 Phase, 32A, 7.4kW, Cable	E1320-A45062		\$1,857
	EVBox Elvi Wifi Only, 3 Phase, 16A, 11kW, Cable	E1350-A45062		\$1,857
	EVBox Elvi Wifi Only, 3 Phase, 32A, 22kW, Cable	E3320-A45062		\$2,078
	EVBox Elvi Wifi + kWh meter, 1 Phase, 32A, 7.4kW, Cable	E1320-A35062		\$1,968
	EVBox Elvi Wifi + kWh meter, 3 Phase, 16A, 11kW, Cable	E1360-A35062		\$2,057
	EVBox Elvi Wifi + kWh meter, 3 Phase, 32A, 22kW, Cable	E3320-A35062		\$2,147
	EVBox Elvi Wifi + kWh + UMTS, 1 Phase, 32A, 7.4kW, Cable	E1320-A15062		\$2,298
	EVBox Elvi Wifi + kWh + UMTS, 3 Phase, 16A, 11kW, Cable	E1360-A15062		\$2,388
	EVBox Elvi Wifi + kWh + UMTS, 3 Phase, 32A, 22kW, Cable	E3320-A15062		\$2,473
	EVBox BusinessLine Hub, 1 Phase, 32A, Single, 7.4kW, Socket	B1321-E1801		\$2,852
	EVBox BusinessLine Hub, 3 Phase, 16A, Single, 11kW, Socket	B3161-E1801		\$3,053
	EVBox BusinessLine Hub, 3 Phase, 32A, Single, 22kW, Socket	B3321-E1801		\$3,253
	EVBox BusinessLine Sat, 1 Phase, 32A, Single, 7.4kW, Socket	B1321-E5801		\$2,644
	EVBox BusinessLine Sat, 3 Phase, 16A, Single, 11kW, Socket	B3161-E5801		\$2,852
	EVBox BusinessLine Sat, 3 Phase, 32A, Single, 22kW, Socket	B3321-E5801		\$3,053
	EVBox BusinessLine Hub, 1 Phase, 2 x 32A, Double, 7.4kW, Socket	B1322-E1801		\$5,023
	EVBox BusinessLine Hub, 3 Phase, 2 x 16A, Double, 11kW, Socket	B3162-E1801		\$5,453
	EVBox BusinessLine Hub, 3 Phase, 2 x 32A, Double, 22kW, Socket	B3322-E1801		\$5,852
	EVBox BusinessLine Sat, 1 Phase, 2 x 32A, Double, 7.4kW, Socket	B1322-E5801		\$4,915
	EVBox BusinessLine Sat, 3 Phase, 2 x 16A, Double, 11kW, Socket	B3162-E5801		\$5,331
	EVBox BusinessLine Sat, 3 Phase, 2 x 32A, Double, 22kW, Socket	B3322-E5801		\$6,352

Approved EV charger manufacturer	Approved EV charger	Model Number	Vetted EV charger suppliers	Supplier price range (\$) <small>ex GST</small>
Fimer Italy	Wall mounted chargers		Fimer Australia	
	Fimer Flexa AC Wallbox - T2 Socket - Future Net - 1Ph 7.4kW	3Q760713100F		\$1,949
	Fimer Flexa AC Wallbox - T2 Socket - Future Net - 3Ph 22kW	3Q762214300F		\$2,066
	Fimer Flexa AC Wallbox - T2 Cord - Future Net - 1Ph 7.4kW	3Q760713200F		\$2,104
	Fimer Flexa AC Wallbox - T2 Cord - Future Net - 3Ph 22kW	3Q762214400F		\$2,221

Approved EV charger manufacturer	Approved EV charger	Model Number	Vetted EV charger suppliers	Supplier price range (\$) <small>ex GST</small>
GARO *	Pedestal mounted chargers		Sealed Performance Batteries	
	LS4 Ground Mount 2 x 22kW T2 Socket outlets + DC Protection + meter + LAN + RFID	LS4DCM T222WO LAN		\$7,999
	LS4 Ground Mount 2 x 7.4kW T2 Socket outlets + DC Protection + meter + LAN + RFID	LS4DCM T274WO LAN		\$7,727

Approved EV charger manufacturer	Approved EV charger	Model Number	Vetted EV charger suppliers	Supplier price range (\$) <small>ex GST</small>
ICAL & Trading Co.	Wall mounted chargers		MG Motor Australia	
	MG ChargeHub 7kW Silver	C11030035		\$1,809
	MG ChargeHub 7kW Red	C11030039		\$1,809
	MG ChargeHub 7kW Black	C11030041		\$1,809

Approved EV charger manufacturer	Approved EV charger	Model Number	Vetted EV charger suppliers	Supplier price range (\$) <small>ex GST</small>
Indra Renewable Technologies *	Wall mounted chargers		EV-NRG	
	Smart Pioneer 7kW AC Type 2 Tethered	190105A102		\$1,544
	Smart Pioneer 7kW AC Type 2 Socket	190105A103		\$1,544

Approved EV charger manufacturer	Approved EV charger	Model Number	Vetted EV charger suppliers	Supplier price range (\$) <small>ex GST</small>
Jetcharge *	Wall mounted chargers		Jetcharge	
	JET Charge Chargemate 7/22kW (1-ph/3-ph)	CHM3P22kW001		\$1,650
	JET Charge Chargemate 7kW NMI (1-ph)	CHM3P22kW002		\$1,850
	JET Charge Chargemate 22kW NMI (3-ph)	CHM3P22kW003		\$2,050

Approved EV charger manufacturer	Approved EV charger	Model Number	Vetted EV charger suppliers	Supplier price range (\$) <small>ex GST</small>
LITEON Technology	Wall mounted chargers			
	Intelligent Type 2, 1 Phase, 7.6kW, OCPP 1.6, RFID, LTE, MID Meter, RCD, Type A, 5M Cable	Intelligent	Solis Energy	\$2,395
	Intelligent Type 2, 3 Phase, 22kW, OCPP 1.6, RFID, LTE, MID Meter, RCD, Type A, 5M Cable	Intelligent		\$2,495
Approved EV charger manufacturer	Approved EV charger	Model Number	Vetted EV charger suppliers	Supplier price range (\$) <small>ex GST</small>
Noodoe *	Wall mounted chargers			
	Noodoe Level 2 7kW AC Premium charger with Ethernet / Wifi / RFID / 1-phase, 32A, 5M Cable	EV AC7P	Noodoe	\$1,222
Approved EV charger manufacturer	Approved EV charger	Model Number	Vetted EV charger suppliers	Supplier price range (\$) <small>ex GST</small>
Ocular *	Wall mounted chargers			
	Ocular IQ Commercial Wall Box Single Phase	IOCAW05C-7S	EVSE	\$1,997
	Ocular IQ Commercial Wall Box Three Phase	IOCAW05C-22S		\$2,279
	Pedestal mounted chargers			
	Ocular IQ Commercial Dual Port Tower Single Phase	IOCAP06C-7 4G	EVSE	\$6,600
	Ocular IQ Commercial Dual Port Tower Three Phase	IOCAP06C-22 4G		\$7,600
Approved EV charger manufacturer	Approved EV charger	Model Number	Vetted EV charger suppliers	Supplier price range (\$) <small>ex GST</small>
Schneider Electric *	Wall mounted chargers			
	EVlink Smart Wallbox - Type 2 Socket - 7.4/22kW - key lock - Single & Three Phase	EVB1A22P4KI	Schneider Electric	\$3,331
	EVlink Smart Wallbox - Type 2 Socket - 7.4/22kW - RFID -Single & Three Phase	EVB1A22P4RI		\$3,823
	EVlink Smart Wallbox - Attached Cable Type 2 - 7.4kW - Key	EVB1A7PCKI		\$3,457
	EVlink Smart Wallbox - Attached Cable Type 2 - 7.4kW - RFID	EVB1A7PCRI		\$3,949
	EVlink Smart Wallbox - Attached Cable Type 2 - 22kW - Key	EVB1A22PCKI		\$3,654
	EVlink Smart Wallbox - Attached Cable Type 2 - 22kW - RFID	EVB1A22PCRI		\$4,146
	EVlink Parking wall mounted - Type 2 Socket - 7.4kW - Single Phase - 2 Type 2 Sockets - RFID	EVW2S7P44R		\$11,272
	EVlink Parking wall mounted - Type 2 Socket - 22kW - Three Phase - 2 Type 2 Sockets - RFID	EVW2S22P44R		\$12,269
	Pedestal mounted chargers			
	EVlink Parking floor standing - Type 2 Socket - 7.4kW - Single Phase - 2 Type 2 Sockets - RFID	EVF2S7P44R	Schneider Electric	\$12,767
	EVlink Parking floor standing - Type 2 Socket - 22kW - Three Phase - 2 Type 2 Sockets - RFID	EVF2S22P44R		\$13,763
Approved EV charger manufacturer	Approved EV charger	Model Number	Vetted EV charger suppliers	Supplier price range (\$) <small>ex GST</small>
Shenzen EN+ Technologies	Wall mounted chargers			
	GET Electric 7kW Intelligent Charger	GETEV7SCG1	GET Electric	\$1,795
	GET Electric 7kW Intelligent Charger	GETEV22SCG3		\$2,995
Approved EV charger manufacturer	Approved EV charger	Model Number	Vetted EV charger suppliers	Supplier price range (\$) <small>ex GST</small>
Starcharge	Wall mounted chargers			
	Saturn Series 22 + 22kW / Type 2 / Case C / 5m Cable / MID	DH-AC0220XG58-D	Wanbang digital energy	\$4,473
	Saturn Series 22 + 22kW / Type 2 / Case B / 5m Cable / MID	DH-AC0220XG58		\$4,173

Approved EV charger manufacturer	Approved EV charger	Model Number	Vetted EV charger suppliers	Supplier price range (\$) <small>ex GST</small>
Siemens *	Wall mounted chargers			
	Versicharge 22kW, 3ph, Parent, Cable	8EM1310-3EJ04-3GA1	Siemens, Yurika Energy Supplies	\$2,632 - \$2,840
	Versicharge 22kW, 3ph, Child, Cable	8EM1310-3EJ04-0GA0		\$2,212 - \$2,500
	Versicharge 7kW, 1ph, Parent, Cable	8EM1310-2EJ04-3GA1		\$2,177 - \$2,475
	Versicharge 7kW, 1ph, Child, Cable	8EM1310-2EJ04-0GA0		\$1,799 - \$2,135
	Versicharge 22kW, 3ph, Parent, Socket	8EM1310-3EH04-3GA1		\$2,569 - \$2,800
	Versicharge 22kW, 3ph, Child, Socket	8EM1310-3EH04-0GA0		\$2,156 - \$2,450
	Versicharge 7kW, 1ph, Parent, Socket	8EM1310-2EH04-3GA1		\$2,121 - \$2,425
	Versicharge 7kW, 1ph, Child, Socket	8EM1310-2EH04-0GA0		\$1,715 - \$2,085
	Pedestal mounted chargers			
	Sicharge CC AC22 Dual Port, 4G/LTE, Communication w/o SIM, Surge Protection, Double Terminal, inclusive of RCD	8EM1000-0BA00-0BA0-ZA00	Siemens	\$10,860
	Sicharge CC AC22 Dual Charge Cable, 4G/LTE, Communication w/o SIM, Surge Protection, Double Terminal, inclusive of RCD	8EM1000-0BA10-0BA0-ZA00		\$12,040
	Sicharge CC AC22, Socket, 22kW, 4G	8EM1000-0BA00-0AA0	Yurika Energy Supplies	\$8,260
	Sicharge CC AC22, Socket, 22kW, LAN	8EM1000-0BH00-0AA0		\$8,260

Approved EV charger manufacturer	Approved EV charger	Model Number	Vetted EV charger suppliers	Supplier price range (\$) <small>ex GST</small>
Smappee	Wall mounted chargers			
	EV Wall Business Single/Three Phase, 1 x 7.4kW/22kW, Charging Socket on Right Side (Type 2)	EVWB-332-BR-E-W	Vista Power Technologies	\$2,278
	EV Wall Business Single/Three Phase, 1 x 7.4kW/22kW, 8M Tethered Charging Lead (Type 2)	EVWB-332-C8R-E-W		\$2,612
	Pedestal mounted chargers			
	EV Base Single/Three Phase, 1 x 7.4/22kW, Charging Socket on Left Side (Type 2)	EVB-1332-BL-E	Vista Power Technologies	\$3,805
	EV Base Single/Three Phase, 1 x 7.4/22kW, Charging Socket on Right Side (Type 2)	EVB-1332-BR-E		\$3,685
	EV Base Single/Three Phase, 2 x 7.4/22kW, Charging Socket on Both Sides (Type 2)	EVB-2332-B-E		\$5,180
	EV Base Single/Three Phase, 1 x 7.4/22kW, 5M Tethered Charging Lead on Left Side (Type 2)	EVB-1332-C5L-E		\$4,044
	EV Base Single/Three Phase, 1 x 7.4/22kW, 5M Tethered Charging Lead on Right Side (Type 2)	EVB-1332-C5R-E		\$3,924
	EV Base Single/Three Phase, 2 x 7.4/22kW, 5M Tethered Charging Lead on Both Sides (Type 2)	EVB-2332-C5-E		\$5,658

Approved EV charger manufacturer	Approved EV charger	Model Number	Vetted EV charger suppliers	Supplier price range (\$) <small>ex GST</small>
Wallbox *	Wall mounted chargers			
	Pulsar Plus 7.4kW Type 2 5M White	PLP1-0-2-2-9-001	Wallbox	\$1,408
	Pulsar Plus 7.4kW Type 2 5M Black	PLP1-0-2-2-9-002		\$1,408
	Pulsar Plus 7.4kW Type 2 7M Black	PLP1-M-2-2-9-002		\$1,589
	Pulsar Plus 22kW Type 2 5M White	PLP1-0-2-4-9-001		\$1,499
	Pulsar Plus 22kW Type 2 5M Black	PLP1-0-2-4-9-002		\$1,499
	Pulsar Plus 22kW Type 2 7M White	PLP1-M-2-4-9-001		\$1,635
	Pulsar Plus 22kW Type 2 7M Black	PLP1-M-2-4-9-002		\$1,635
	Copper SB 22kW Socket	CPB1-S-2-4-8-002		\$1,880
	Commander 2 7.4kW Type 2 5M White	CMX2-0-2-2-8-001		\$2,262
	Commander 2 7.4kW Type 2 5M Black	CMX2-0-2-2-8-002		\$2,262
	Commander 2 22kW Type 2 5M White	CMX2-0-2-4-8-001		\$2,262
	Commander 2 22kW Type 2 5M Black	CMX2-0-2-4-8-002		\$2,262
	Pulsar Max 7.4kW Type 2 5M White	PLP2-0-2-2-9-001		\$1,544
	Pulsar Max 7.4kW Type 2 5M Black	PLP2-0-2-2-9-002		\$1,544
	Pulsar Max 7.4kW Type 2 7M Black	PLP2-M-2-2-9-002		\$1,726
	Pulsar Max 22kW Type 2 5M White	PLP2-0-2-4-9-001		\$1,635
	Pulsar Max 22kW Type 2 5M Black	PLP2-0-2-4-9-002		\$1,635
	Pulsar Max 22kW Type 2 7M White	PLP2-M-2-4-9-001		\$1,817
	Pulsar Max 22kW Type 2 7M Black	PLP2-M-2-4-9-002		\$1,817

Approved EV charger manufacturer	Approved EV charger	Model Number	Vetted EV charger suppliers	Supplier price range (\$) <small>ex GST</small>
Wineline Technology	Wall mounted chargers			
	ChargeGreen 7kW AC Charger	CG-7	Foton Mobility	\$799
	ChargeGreen 22kW AC Charger	CG-22		\$2,999